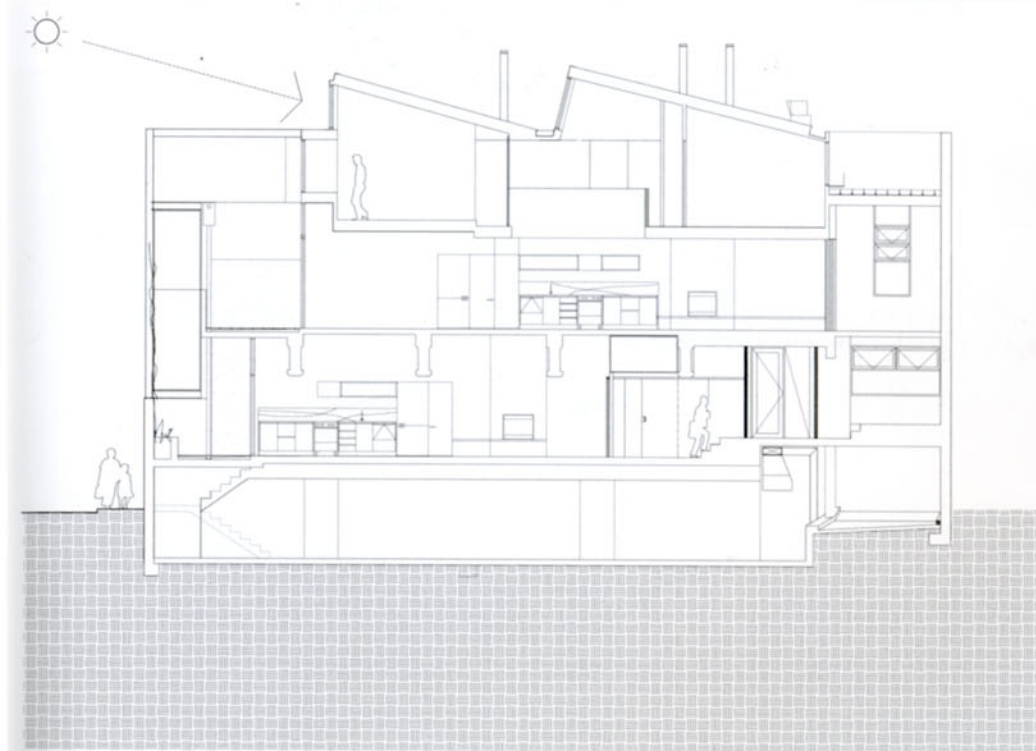




# Details for Living

Stephen Crafti

images  
Publishing



## Constructing a view

*Neometro Architects*

These apartments were built at the same time as another set of apartments directly opposite. The view of the city slowly disappeared, replaced by red-brick walls and a series of walkways. "We knew the views of the city would diminish," says architect Karen Alcock, a director of Neometro Architects.

To ensure a 'respectable view', the original building was cut back by a couple of metres to allow for a garden aspect. "This building was originally a potato factory. The only outdoor space was the loading bay," says Alcock. Steel portal frames were added to the front façade, along with stainless steel wire that's been arranged in a diamond pattern. "We wanted to create a leafy outlook," says Alcock, who used the trellis-like screen to grow Virginia creeper. In only a few months, the creeper has spread to the second level of the

apartments. "It's a terrific vine. It turns from red through to yellow, depending on the season. The leaves always return in summer when they're needed most," explains Alcock.

The apartments on the ground floor feature concrete fences and planter boxes, which are raised slightly above the pavement level. The upper level includes operable awnings over the windows. "These apartments still have a view of the city. The awnings allow the residents to control the amount of light," says Alcock.

Fibreglass walls enclose the front staircase leading to the apartments; the light from within the stairwell creates a lantern effect at night. According to Alcock, "You're not conscious of being overlooked, whether you're climbing the stairs or sitting out on the balcony."

